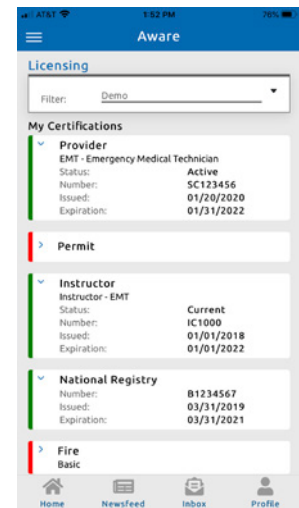
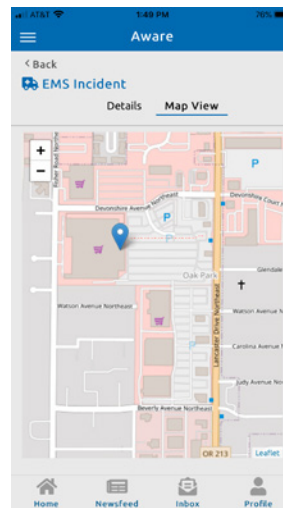
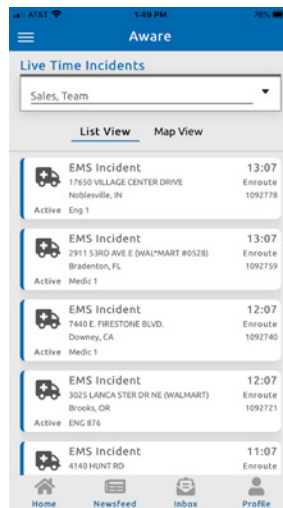
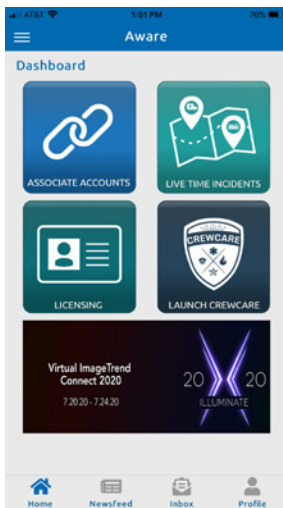


# IMAGETREND® AWARE™

ImageTrend Aware is a free mobile app designed to connect ImageTrend solutions in a single platform for you to manage your professional and personal life. This easy-to-use app allows you to access information from multiple ImageTrend products, such as ImageTrend Elite™ and ImageTrend License Management™ in one integrated solution, even if you work with multiple agencies.

Users can view all active incidents occurring within the communities they serve, including incident details, assigned apparatus or vehicles and their response status, along with turn-by-turn directions to the scene. Aware extends the ability to connect to licensing repositories to view licenses and certifications, application statuses, associated services and the ability to verify user demographic or contact information. Stay in the know by receiving notifications and managing inbox messages all within Aware.



For more information contact [ask@imagnetrend.com](mailto:ask@imagnetrend.com)

# IMAGETREND® AWARE™

## The Future of Aware

Coming this Fall, ImageTrend will release personal exposure tracking in Aware to easily document and track exposures throughout the entirety of your career. ImageTrend stays committed to not only delivering solutions pertinent to patients, communities and public safety, but also for the health and safety of first responders.

Additionally, integration with ImageTrend Continuum will provide insight into your individual score card and stats, along with alerting and notifications. Near real-time, department-defined metrics can be displayed for transparent knowledge sharing. ImageTrend Slate, ImageTrend's new operations management solution, will connect with Aware by the end of 2020. Slate's first module is an intuitive, user-friendly public safety scheduling solution. With this integration, you will be able to use Aware or Slate to easily view and manage your full schedule from anywhere, including time off, trades and information about your working location.

## Why Aware?

ImageTrend Aware is designed for all ImageTrend users – not just administrators. It brings together vital information specific to you from the ImageTrend solution you use to keep you in the know. For the first time ever, you can access data from all ImageTrend solutions you use at each organization you work at in one single mobile application.

Aware is not a mobile ePCR solution, but a hub for you to access the information most relevant and important to you. Aware is available as a free download from the Apple App Store for iOS devices and from Google Play for Android devices. Access is included with all signed ImageTrend solution contracts. Be in the know. Be Aware.



IMAGETREND®  
**CONNECT**

**Join us at our annual  
Connect User Conference!**

Connect with industry leaders and peers nationwide.  
More information: [www.ImageTrend.com/Connect](http://www.ImageTrend.com/Connect)

For more information contact  
[ask@imagnetrend.com](mailto:ask@imagnetrend.com)