

5

Tips for finding the

IDEAL

{ Mobile Integrated Healthcare/
Community Parmedicine }

MIH/CP SOLUTION



Mobile Integrated Healthcare (MIH), or Community Paramedicine (CP) has been sweeping the nation as a cost-effective way to treat chronic conditions, reduce hospital readmissions, reduce unnecessary 911 transports and better reach underserved segments of the population.

It also makes good use of paramedics' medical training and could offer career paths to retain experienced providers. As your agency considers starting a MIH/CP program of your own, you may be faced with the questions of how care is documented and what reporting will be needed. You may have several options to consider, but which is best for your needs?



#1:

Keep It Patient-Centric

In 911 call situations, medics are asked to make quick assessments - usually starting with very little to no information about the patient other than what they observe or what bystanders may have witnessed prior to unit arrival. In those cases the focus is on the evidence of the incident to stabilize and transport if necessary to the appropriate emergency department.



The community paramedicine approach is entirely different. Patients can be selected based on criteria and enrolled into the program that will best serve their needs. The medic may need to access and consider current medications from various care providers or evaluate vitals over many visits. They will be able to take a proactive approach toward reducing risks such as trip hazards in the home or identify the patient's support network. With this patient-centric approach to care, ePCR systems are ill-equipped to gather the additional data and make it easily accessible to the medic. A more specialized MIH/CP solution is needed.

#2:

Stay Flexible



While specialized MIH/CP software can track patients in a different way than ePCR software, you'll still want flexibility for new programs, new types of care or conditions, and other interactions to report additional touchpoints your organization has within the broader community. A hard-coded, proprietary solution makes change difficult or costly. Look for a system that allows for the creation of new worksheets and forms as your agency's or community's needs change.

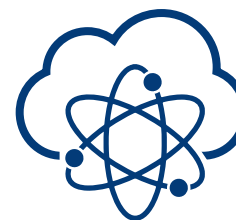
Signs of flexibility:



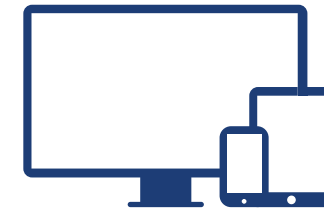
New worksheets & forms can be built as you go



Rules can be built around your business workflow



Web-based to keep pace with medicine & technology



Platform-independent design for more hardware choices

#3:

Share with Other Providers



A connected system can greatly reduce data entry, while making it easier for care providers to properly treat the patient. Your solution should allow for integrations with ePCR, HIE, hospital EMR and other relevant systems. Everything should be conducted with secure methods to protect sensitive patient data.

Connectivity checklist:



Integrates with the latest ePCR data standards



Can speak the language of HL7 with hospitals



Integrates data across multiple encounters/providers

#4:

Use the Right Tool



Use a system that is built for community paramedicine. Generally, it is software that is similar to what medics use in the field for 911 calls, and is easier for them to use without learning new, complex technology. For example, hospital-oriented solutions are not always the ideal fit for EMS-based care. ED and clinical documentation often are focused on inpatient treatment and not focused on the needs of in-house visits and home safety assessments.

Does Your Solution Fit?



Evaluation of the patient's living conditions & hazards



Understanding of the patient's support network



Approachable by the care provider (community paramedic)

#5: Give Yourself Credit

It might be easy to focus on the function in the field, but the success of a MIH/CP program will be demonstrated through empirical evidence. Powerful reporting allows you to examine the success factors of your program in addition to your patients' progress toward their goals. Advanced reporting helps measure your impact and can gauge effectiveness in the **Triple Aim**:



Improving patient experience



Improving the health of populations



Reducing the per capita costs

Can You Prove It? Reporting Should Be:



Built-in for security & reliability



Able to compare populations or groups by selectable criteria



Meaningful & drive improvement

ABOUT ELITE COMMUNITY HEALTH™

As part of a fully integrated healthcare system, your community paramedicine program will rely on data from various sources to provide a complete picture of the patient's conditions, medications, environmental factors and barriers to care. ImageTrend Elite solutions for integrated healthcare make those connections, including your ImageTrend Elite ePCR data. When you partner with ImageTrend, you will be confident in receiving a solution designed for the needs of your community.

ABOUT US

ImageTrend, Inc. is dedicated to connecting life's most important data in the healthcare and emergency response community. ImageTrend delivers software solutions, data analytics and services for EMS, Fire, hospitals, community paramedicine (CP), critical care and preparedness to enable fully integrated patient-centric healthcare and public safety. ImageTrend's commitment to innovation, our clients, and providing world-class implementation and support is unsurpassed. Based in Lakeville, Minnesota, ImageTrend combines business analysis, creative design and data-driven architecture to offer scalable solutions and strategies for today and the future.

www.ImageTrend.com/CP
ask@imagetrend.com | (888) 469-7789

